

# THAT STERN LOOK

LIVE AT THE 55 BAR (2008) - MAIN GROOVE & CHORUS

BASS GUITAR

SWUNK ♩ = 180

MUSIC BY: JANEX GWIZDALA

MAIN GROOVE

G7



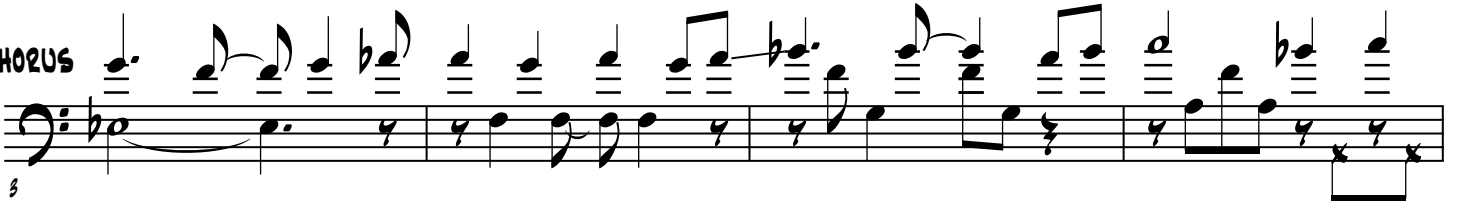
CHORUS

E<sup>b</sup>MAS7

F<sup>9</sup>

G<sup>MIN</sup>

F/A

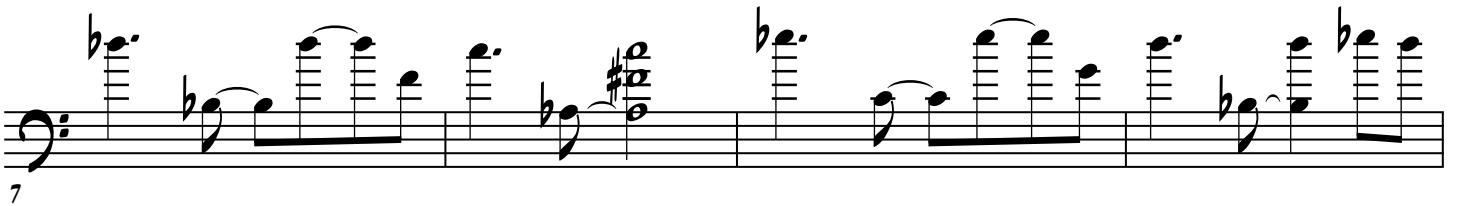


B<sup>b</sup>MIN

A<sup>b</sup>6

C<sup>MIN</sup>

B<sup>b</sup>6



A7ALT

C<sup>#</sup>DIM

D<sup>MIN</sup>

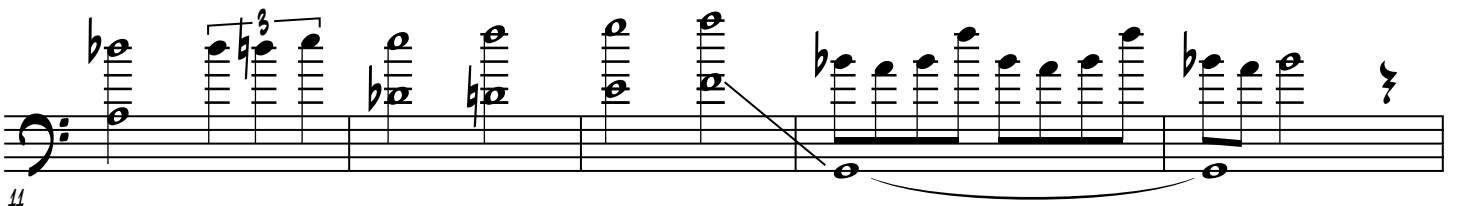
C/E

F

G<sup>MIN</sup>11

1st time: Whole Note (G, bottom)

2nd time: Top, 1 string per note, let chord ring.



E<sup>b</sup>MAS7

D<sup>SUS</sup>

D

